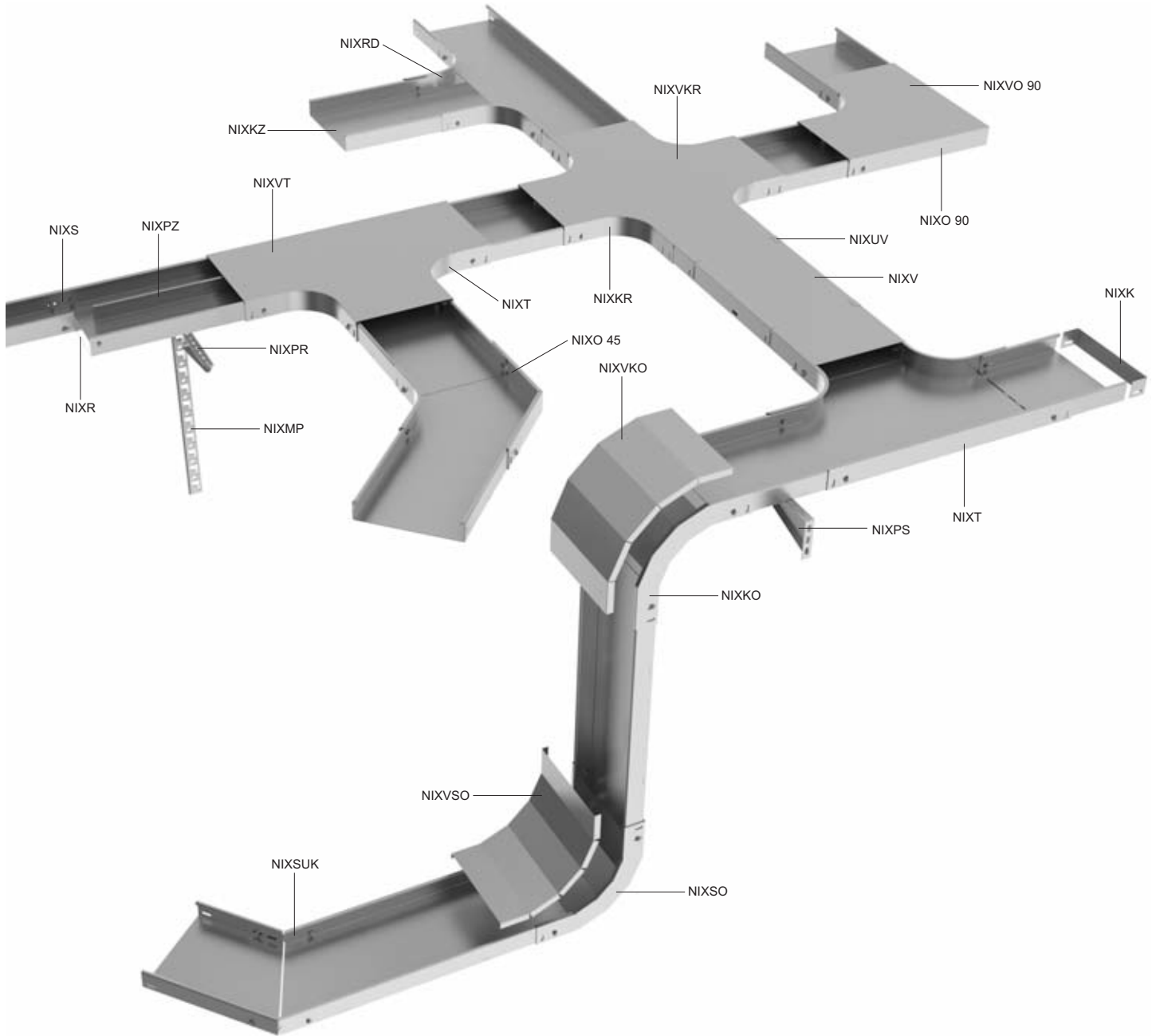




**CABLE
TRAYS
MARS
STAINLESS**



OVERVIEW OF SYSTEM ELEMENTS



marking	description	page
NIXK	end-piece	13
NIXKO	low elbow 90°	7
NIXKR	cross-over	10
NIXKZ	cable tray	3
NIXMP	assembly profile	17
NIXO 45	elbow 45°	6
NIXO 90	elbow 90°	5
NIXPR	clamp support	16
NIXPS	wall bracket	16
NIXPZ	partition	13
NIXR	reduction	12

marking	description	page
NIXRD	reduction piece	11
NIXS	coupling	14
NIXSO	rising elbow 90°	8
NIXSUK	angle coupling	12
NIXT	T-piece	9
NIXUV	cover fixture	4
NIXV	cable tray cover	4
NIXVKO	low elbow 90° cover	7
NIXVKR	cross-over cover	10
NIXVO 90	elbow cover 90°	5
NIXVSO	rising elbow 90° cover	8

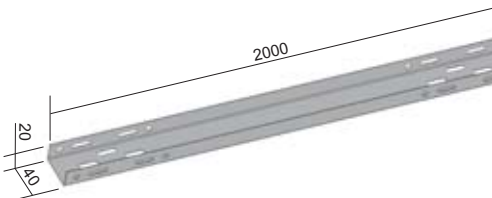


perforated cable tray

item number	↑	‡	↓	IX
NIXKZ 20X40	0,8	0,4	2	⊕

The standard length of the cable tray is 2 m.

The joining of the trays is performed using the coupling NIXS 40 (page 14) and two bolts NIXSMP 5X10.



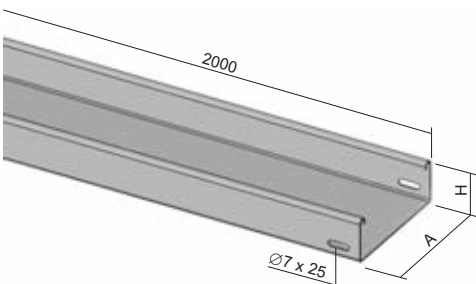
non-perforated cable tray

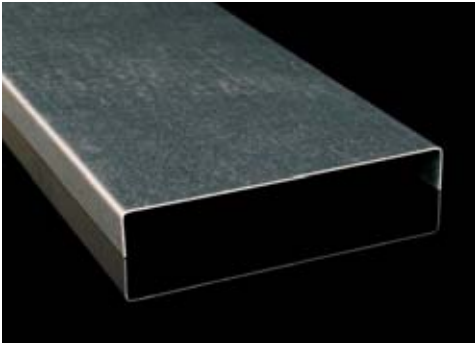
item number	A	H	↑	‡	↓	IX
NIXKZN 50X62	62	50	0,8	1,0	4	⊕
NIXKZN 50X125	125	50	0,8	1,3	4	⊕
NIXKZN 50X250	250	50	0,8	2,8	4	⊕
NIXKZN 100X125	125	100	0,8	2,1	8	⊕
NIXKZN 100X250	250	100	0,8	2,9	8	⊕
NIXKZN 100X500	500	100	1,2	7,2	8	⊕

The standard length of the cable tray is 2 m.

The joining of the trays is performed using the couplings NIXS 50 / NIXS 100 (page 14) and the bolts NIXSMP 6X10 (page 20).

The joining of the tray with accessories is direct, it is performed using the bolts NIXSMP 6X10 (page 20).

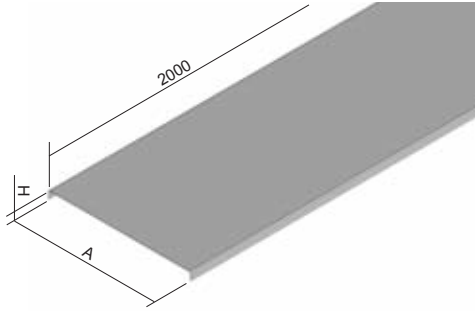




cable tray cover

item number	A	H	‡	‡	IX
NIXV 40	40	10	0,8	0,29	⊕
NIXV 62	62	11	0,8	0,45	⊕
NIXV 125	125	11	0,8	0,76	⊕
NIXV 250	250	11	0,8	1,82	⊕
NIXV 500	500	14	1,0	4,28	⊕

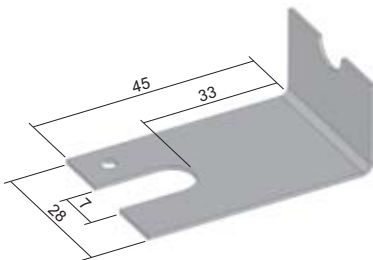
The standard length of the cable tray cover is 2 m.
The fixing of the cover to the tray is done using the cover fixture NIXUV (page 4).



cover fixture

item number	‡	IX
NIXUV	0,01	⊕

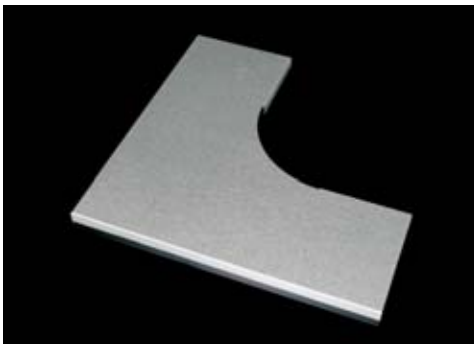
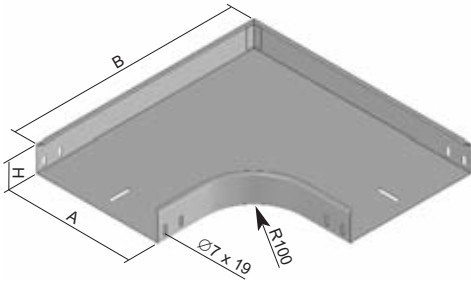
Serves for fastening the covers to the trays or shaped pieces using bolts.



**elbow 90°**

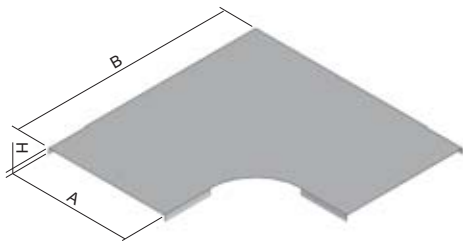
item number	A	H	B	↑	‡	±	IX
NIXO 90X50X62	62	50	265	0,8	0,31	4	⊕
NIXO 90X50X125	125	50	328	0,8	0,50	4	⊕
NIXO 90X50X250	250	50	453	0,8	1,77	4	⊕
NIXO 90X100X125	125	100	328	0,8	0,70	8	⊕
NIXO 90X100X250	250	100	453	0,8	2,22	8	⊕
NIXO 90X100X500	500	100	703	1,0	3,07	8	⊕

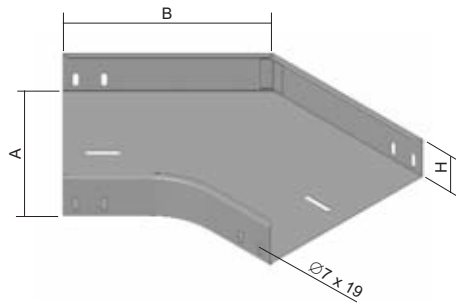
The connection is performed by direct sliding of the cable tray into the shaped piece and subsequent securing with bolts NIXSMP 6X10 (page 20).
For the elbows NO 90X100X500 the outer right angle of the side walls is replaced by skewed cut.

**víko oblouku 90°**

item number	A	H	B	↑	‡	IX
NIXVO 90X62	62	12	267	0,8	0,12	⊕
NIXVO 90X125	125	12	330	0,8	0,25	⊕
NIXVO 90X250	250	12	455	0,8	1,17	⊕
NIXVO 90X500	500	15	705	1,0	3,91	⊕

To fix the cover use cover fixtures NIXUV (page 4).
For the elbow cover NIXVO 90X500 the outer right angle is replaced by skewed cut.

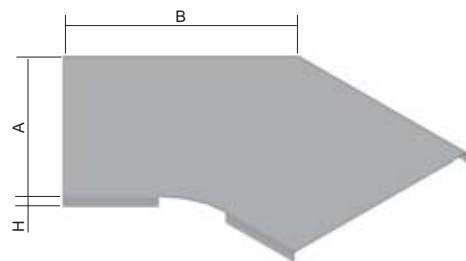
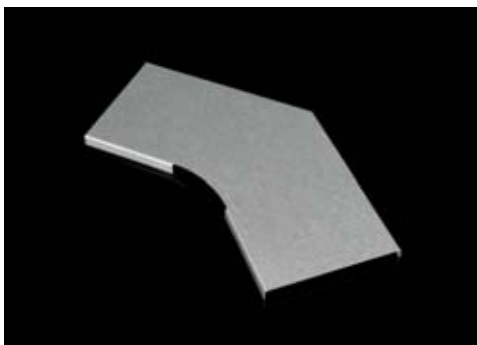
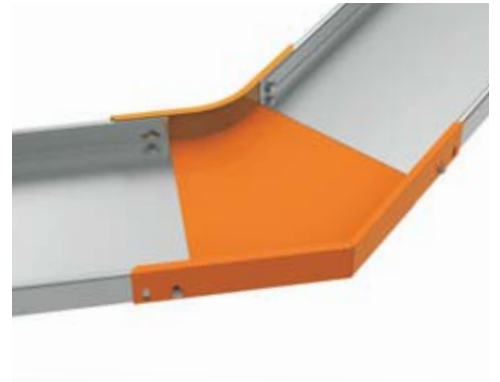




elbow 45°

item number	A	H	B	↑	‡	⌄	IX
NIXO 45X50X62	62	50	168	0,8	0,24	4	⊕
NIXO 45X50X125	125	50	194	0,8	0,36	4	⊕
NIXO 45X100X125	125	100	245	0,8	0,52	4	⊕
NIXO 45X100X125	125	100	194	0,8	0,52	4	⊕
NIXO 45X100X250	250	100	245	0,8	1,41	8	⊕
NIXO 45X100X500	500	100	350	1,0	3,25	8	⊕

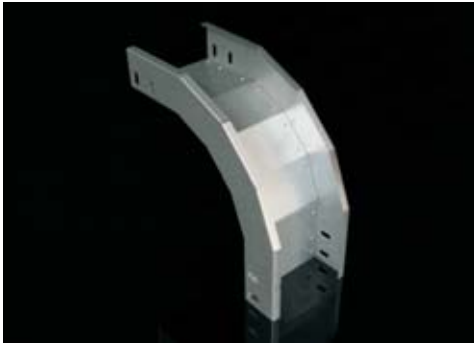
The connection is performed by direct sliding of the cable tray into the shaped piece and subsequent securing with bolts NIXSMP 6X10 (page 20).



elbow cover 45°

item number	A	H	B	↑	‡	IX
NIXVO 45X62	62	12	168	0,8	0,08	⊕
NIXVO 45X125	125	12	194	0,8	0,16	⊕
NIXVO 45X250	250	12	245	0,8	0,69	⊕
NIXVO 45X500	500	15	350	1,0	2,49	⊕

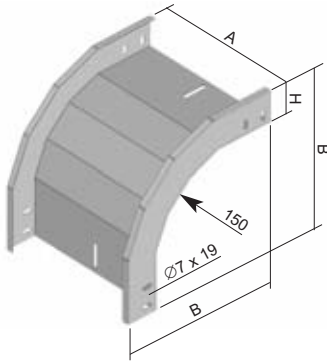
To fix the cover use cover fixtures NIXUV (page 4).



low elbow 90°

item number	A	H	B	↑	‡	‡̄	IX
NIXKO 90X50X62	62	50	275	0,8	0,35	4	⊕
NIXKO 90X50X125	125	50	275	0,8	0,64	4	⊕
NIXKO 90X50X250	250	50	275	0,8	1,25	4	⊕
NIXKO 90X100X125	125	100	325	0,8	0,79	8	⊕
NIXKO 90X100X250	250	100	325	0,8	1,21	8	⊕
NIXKO 90X100X500	500	100	325	1,0	1,91	8	⊕

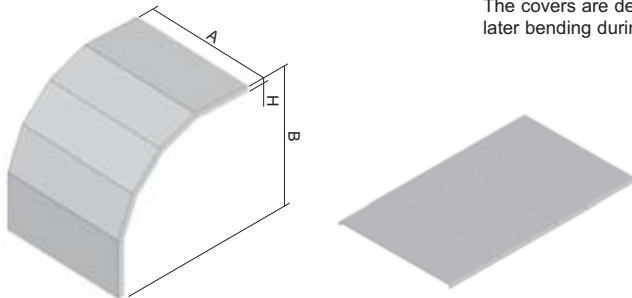
The connection is performed by direct sliding of the cable tray into the shaped piece and subsequent securing with bolts NIXSMP 6X10 (page 20).



low elbow 90° cover

item number	A	H	B	↑	‡	IX
NIXVKO 90X50X62	62	12	276	0,8	0,18	⊕
NIXVKO 90X50X125	125	12	276	0,8	0,38	⊕
NIXVKO 90X50X250	250	12	276	0,8	0,38	⊕
NIXVKO 90X100X125	125	12	326	0,8	0,93	⊕
NIXVKO 90X100X250	250	12	326	0,8	0,68	⊕
NIXVKO 90X100X500	500	15	326	1,0	2,18	⊕

To fix the cover use cover fixtures NIXUV (page 4).
The covers are delivered straight. They are made from one piece of sheet metal with pre-cut side walls for later bending during assembly.

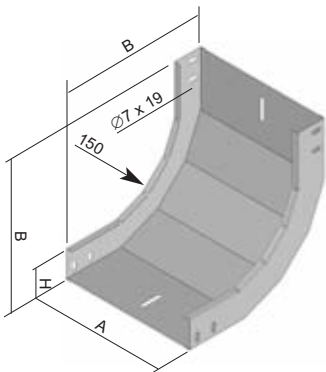




rising elbow 90°

item number	A	H	B	↑	‡	⌄	IX
NIXSO 90X50X62	62	50	275	0,8	0,39	4	⊕
NIXSO 90X50X125	125	50	275	0,8	0,73	4	⊕
NIXSO 90X50X250	250	50	275	0,8	1,41	4	⊕
NIXSO 90X100X125	125	100	325	0,8	0,91	8	⊕
NIXSO 90X100X250	250	100	325	0,8	1,53	8	⊕
NIXSO 90X100X500	500	100	325	1,0	2,55	8	⊕

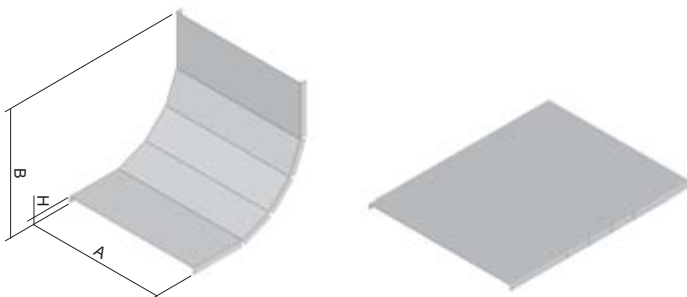
The connection is performed by direct sliding of the cable tray into the shaped piece and subsequent securing with bolts NIXSMP 6X10 (page 20).



rising elbow 90° cover

item number	A	H	B	↑	‡	IX
NIXVSO 90X62	62	12	221	0,8	0,14	⊕
NIXVSO 90X125	125	12	221	0,8	0,26	⊕
NIXVSO 90X250	250	12	221	0,8	0,64	⊕
NIXVSO 90X500	500	15	221	1,0	1,51	⊕

To fix the cover use cover fixtures NIXUV (page 4). The covers are delivered straight. They are made from one piece of sheet metal with pre-cut side walls for later bending during assembly.

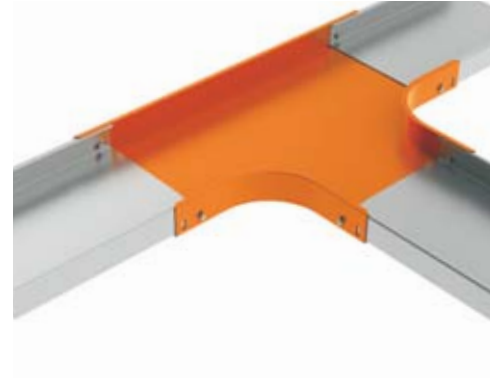
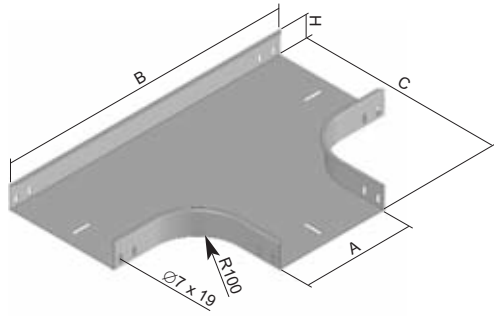




T-piece

item number	A	H	B	C	↑	‡	↓f	IX
NIXT 50X62	62	50	465	265	0,8	0,39	6	⊕
NIXT 50X125	125	50	528	328	0,8	0,60	6	⊕
NIXT 50X250	250	50	653	453	0,8	2,18	6	⊕
NIXT 100X125	125	100	528	328	0,8	1,03	12	⊕
NIXT 100X250	250	100	653	453	0,8	2,62	12	⊕
NIXT 100X500	500	100	903	703	1,0	5,37	12	⊕

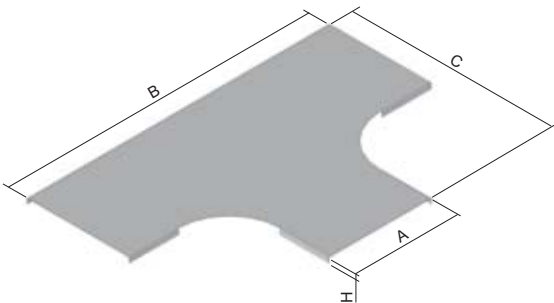
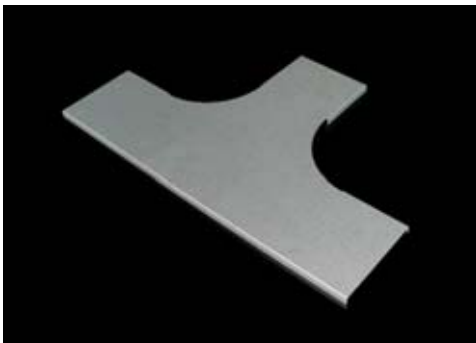
The connection is performed by direct sliding of the cable tray into the shaped piece and subsequent securing with bolts NIXSMP 6X10 (page 20).



T-piece cover

item number	A	H	B	C	↑	‡	IX
NIXVT 62	62	12	465	266	0,8	0,17	⊕
NIXVT 125	125	12	528	329	0,8	0,31	⊕
NIXVT 250	250	12	653	454	0,8	1,52	⊕
NIXVT 500	500	15	903	705	1,0	4,47	⊕

To fix the cover use cover fixtures NIXUV (page 4).

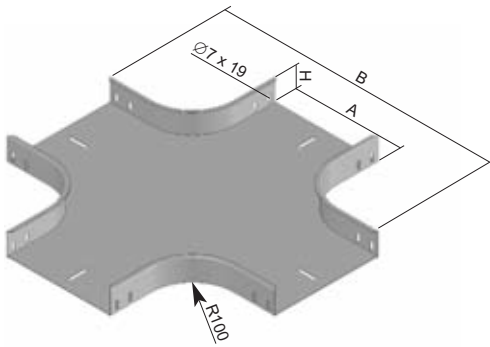




CROSS-OVER

item number	A	H	B	↑	‡	↓‡	IX
NIXKR 50X62	62	50	465	0,8	0,50	8	⊕
NIXKR 50X125	125	50	528	0,8	0,72	8	⊕
NIXKR 50X250	250	50	653	0,8	2,60	8	⊕
NIXKR 100X125	125	100	528	0,8	0,92	16	⊕
NIXKR 100X250	250	100	653	0,8	3,00	16	⊕
NIXKR 100X500	500	100	903	1,0	5,90	16	⊕

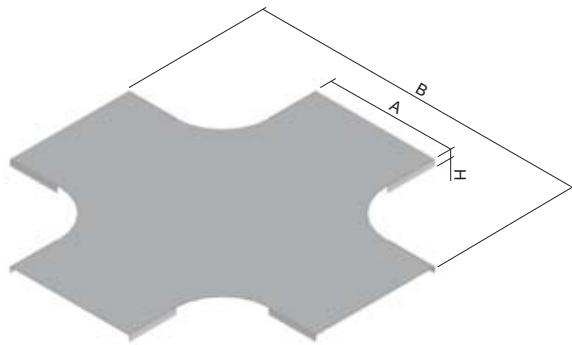
The connection is performed by direct sliding of the cable tray into the shaped piece and subsequent securing with bolts NIXSMP 6X10 (page 20).

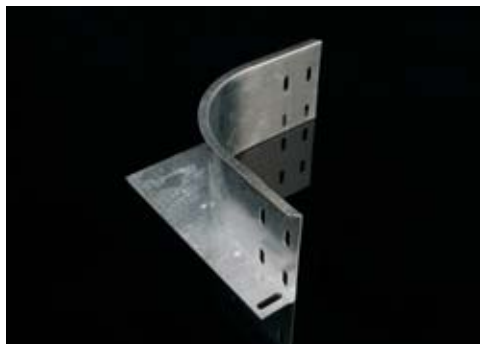


CROSS-OVER COVER

item number	A	H	B	↑	‡	IX
NIXVKR 62	62	12	465	0,8	0,27	⊕
NIXVKR 125	125	12	528	0,8	0,41	⊕
NIXVKR 250	250	12	653	0,8	1,75	⊕
NIXVKR 500	500	15	903	1,0	4,70	⊕

To fix the cover use cover fixtures NIXUV (page 4).

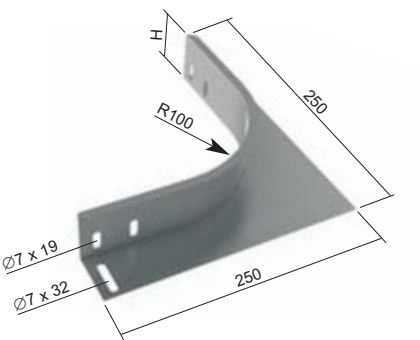
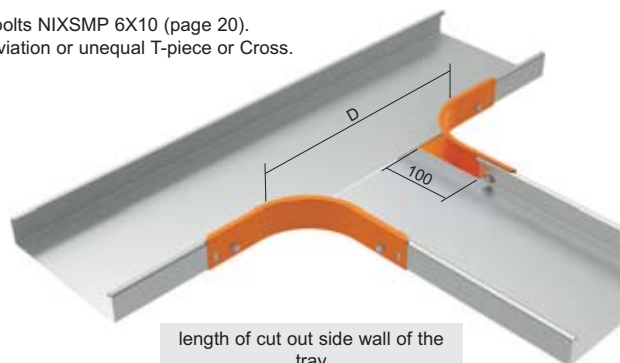




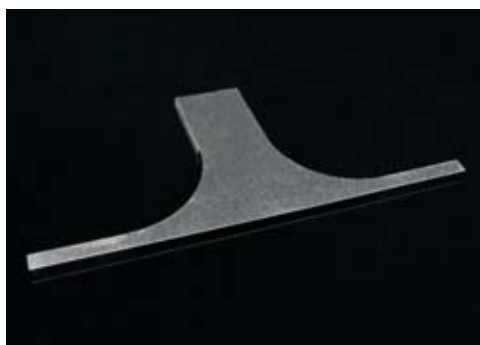
reduction piece

item number	H	↑	‡	⌈	IX
NIXRD 50	50	0,8	0,12	4	⊕
NIXRD 100	100	0,8	0,25	8	⊕

The joining is performed using the bolts NIXSMP 6X10 (page 20).
It serves to create the additional deviation or unequal T-piece or Cross.
Always to be used in a pair.



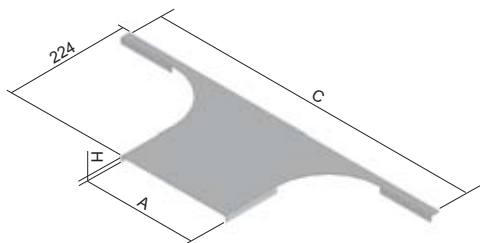
length of cut out side wall of the tray	
branch to a channel	D
NKZI 50X62	262
NKZI 50X125	325
NKZI 100X125	325
NKZI 50X250	450
NKZI 100X250	450
NKZI 100X500	700

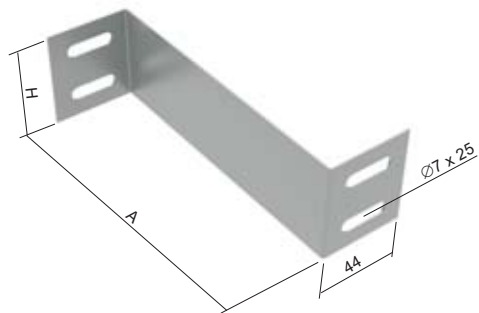


branch cover

item number	A	H	C	↑	IX
INOXVOH 62	62	12	462	0,8	⊕
INOXVOH 125	125	12	525	0,8	⊕
INOXVOH 250	250	12	650	0,8	⊕

To fix the cover use cover fixtures NIXUV (page 4).
The lid serves to the covering of T-piece, eventually of the cross, to be created by help of reductive parts.

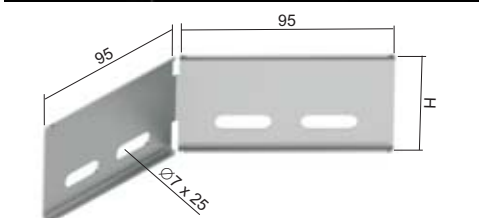
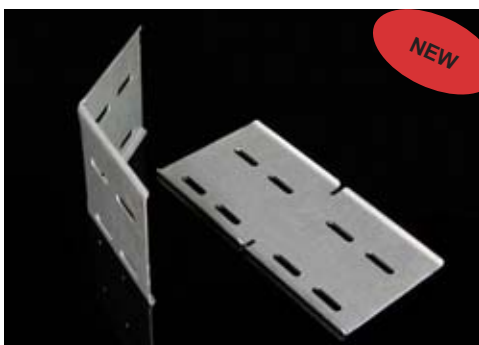




reduction

item number	A	H	t	g	nf	IX
NIXR 50X62	62	40	0,8	0,04	2	⊕
NIXR 50X125	125	40	0,8	0,05	2	⊕
NIXR 50X250	250	40	0,8	0,11	2	⊕
NIXR 100X125	125	90	0,8	0,09	4	⊕
NIXR 100X250	250	90	0,8	0,19	4	⊕

The joining is performed using the bolts NIXSMP 6X10 (page 20).
The reduction is used for the transition between various tray widths with identical height of side walls.



angle coupling

item number	H	t	g	IX
NIXSUK 50	47	1,0	0,06	⊕
NIXSUK 100	97	1,0	0,12	⊕

The joining is performed using the bolts NIXSMP 6X10 (page 20).
Angle couplings are mostly used at places where the route is slightly bended, for large bending radiuses or for the circumvention of columns and pillars.

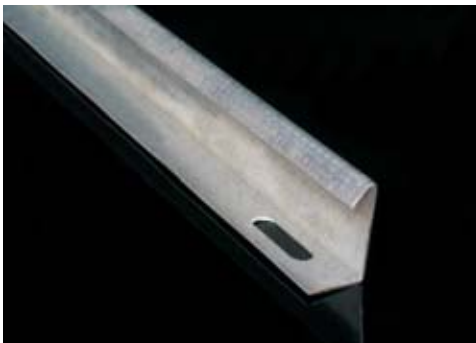
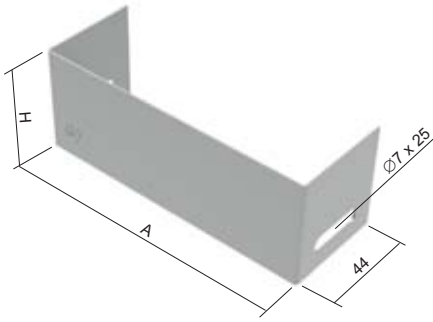




end-piece

item number	A	H	↑	‡	‡†	IX
NIXK 50X62	62	45	0,8	0,04	2	⊕
NIXK 50X125	125	45	0,8	0,05	2	⊕
NIXK 50X250	250	45	0,8	0,11	4	⊕
NIXK 100X125	125	95	0,8	0,09	2	⊕
NIXK 100X250	250	95	0,8	0,19	4	⊕
NIXK 100X500	500	95	0,8	0,42	4	⊕

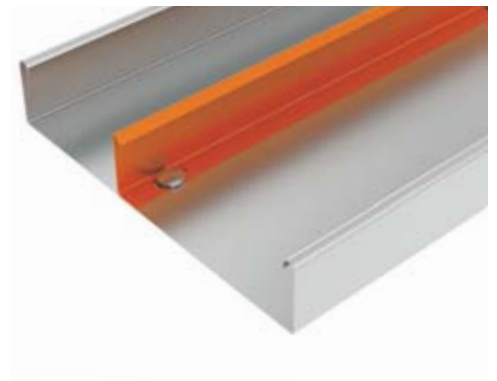
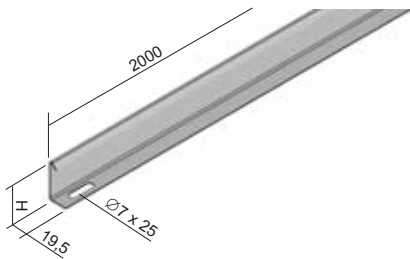
The joining is performed using the bolts
NIXSMP 6X10 (page 20).
The end-piece serves for the ending off a route.

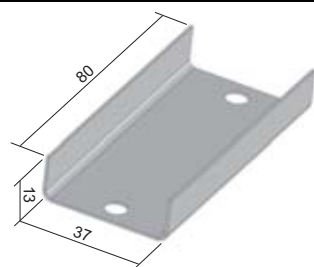


partition

item number	H	↑	‡	IX
NIXPZ 50	44	0,8	0,47	⊕
NIXPZ 100	94	0,8	0,75	⊕

The standard length of the partition is 2 m.
The fixing of the partition is carried out by bolts
NIXSMP 6X10 (page 20).

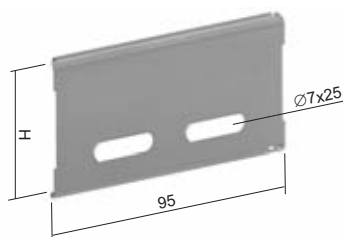
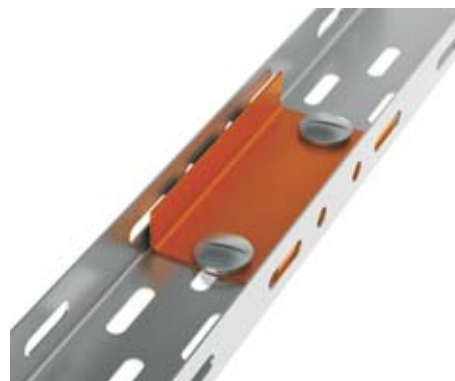




coupling

item number	↑	‡	↓f	IX
NIXS 40	1,0	0,04	2	⊕

The connection is made by bolt NIXSMP 5X10 (page 20).
Lock washers (part of NIXSMP 5X10) shall always be used under the bolt head and under nut M5 to meet the requirement of conductive connecting according to ČSN 32 2000-4-41.



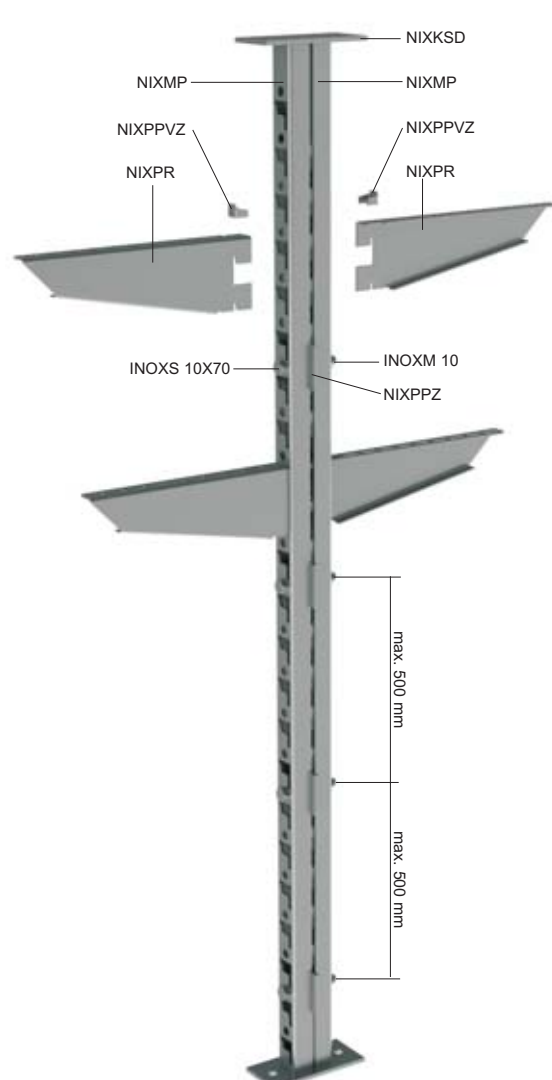
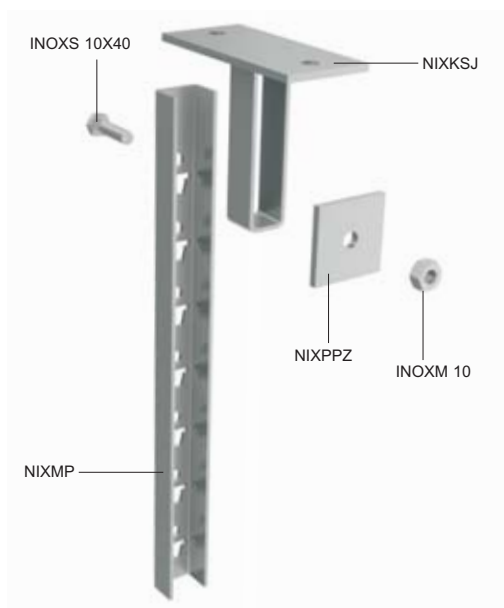
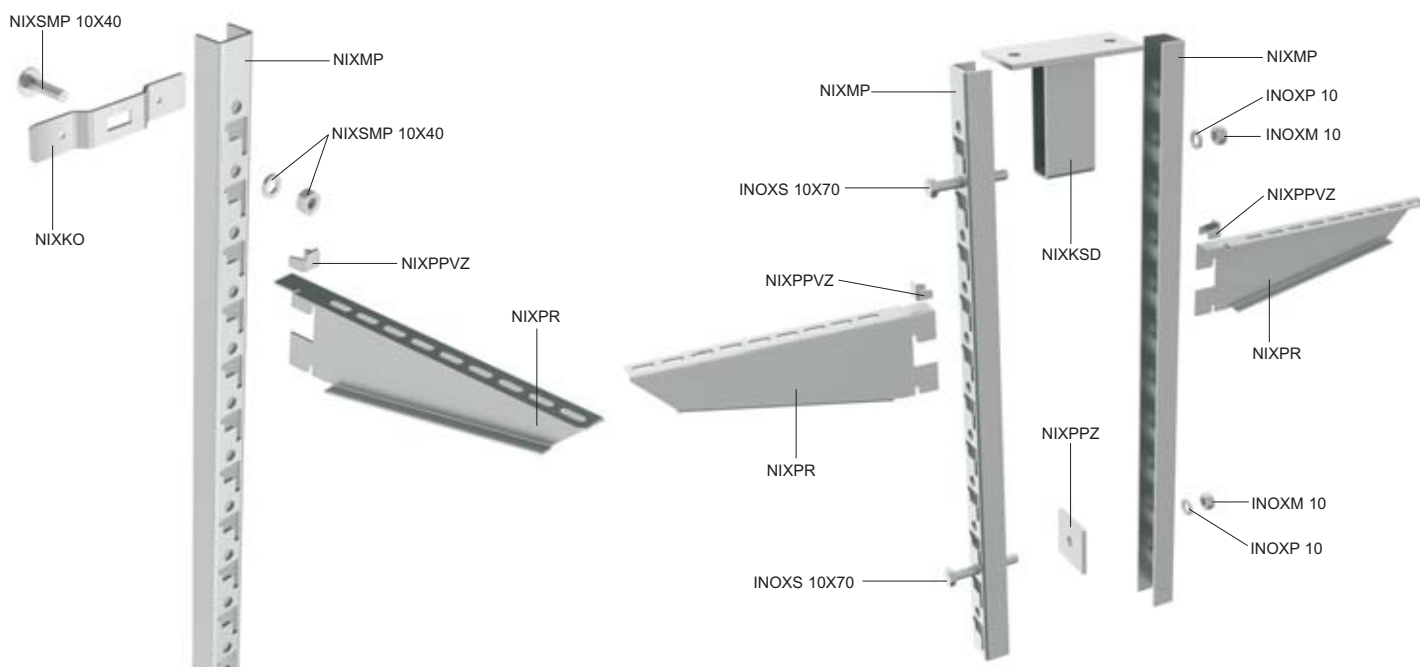
coupling

item number	H	↑	‡	↓f	IX
NIXS 50	47	1,0	0,02	2	⊕
NIXS 100	97	1,0	0,09	4	⊕

The connection is made by bolt NIXSMP 6X10 (page 20).
Lock washers (part of NIXSMP 6X10) shall always be used under the bolt head and under nut M6 to meet the requirement of conductive connecting according to ČSN 32 2000-4-41.



examples of assemblies - assembly profiles, supports, brackets



marking	description	page
NIXKO	bracket	18
NIXKSD	double vertical bracket	18
NIXKSJ	single vertical bracket	18
NIXMP	assembly profile	17
NIXPPVZ	safety lock	17
NIXPPZ	washer	17
NIXPR	clamp support	16
NIXSMP 10X40	bolt + nut + washers	20
INOXS 10X40	bolt	20
INOXS 10X70	bolt	20
INOXM 10	nut	20
INOXPD 10	washers	21

The distance of suspended assembly profiles depends on the ceiling material, the load carrying capacity of fasteners and the weight of cables installed.

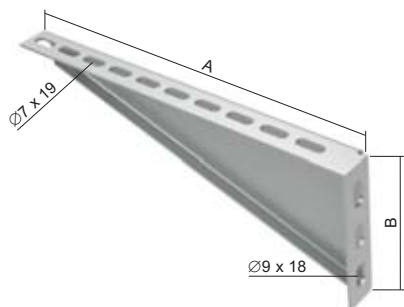
The brackets are attached to the ceiling and the floor in the same way.



wall bracket

item number	A	B	t	‡	‡f	IX
NIXPS 62	82	42	1,5	0,06	1	⊕
NIXPS 125	145	70	2	0,17	2	⊕
NIXPS 250	270	100	2	0,37	2	⊕

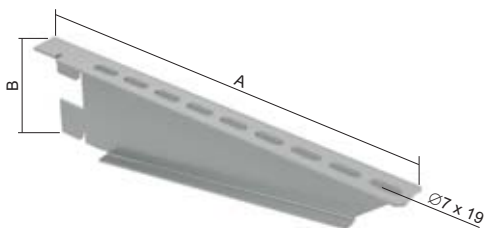
Cable tray attaching to the wall support is carried out by bolts NIXSMP 6X10 (page 20).



clamp support

item number	A	B	‡	‡f	IX
NIXPR 125	148	78,5	0,16	2	⊕
NIXPR 250	273	78,5	0,32	2	⊕
NIXPR 500	523	78,5	0,65	2	⊕

Cable tray attaching to the support is carried out by bolts NIXSMP 6X10 (page 20).
 When installed in an assembly profile, the support has to be secured by a safety lock NIXPPVZ (page 17).
 Example of assembling - see page 15.

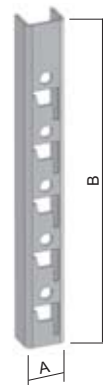




assembly profile

item number	A	B	‡	‡̄	IX
NIXMP 300	35	300	0,45	2	⊕
NIXMP 600	35	600	0,94	2	⊕
NIXMP 800	35	800	1,24	3	⊕
NIXMP 1200	35	1200	1,84	3	⊕
NIXMP 2000	35	2000	3,08	4	⊕

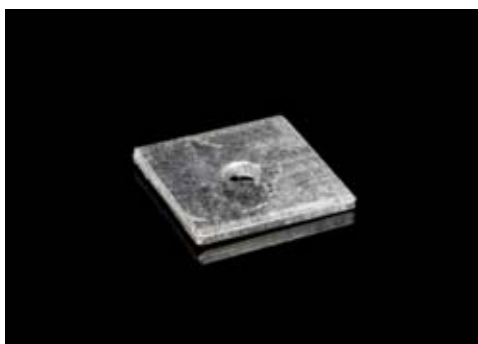
For the attachment of the assembly profile there is used the bracket NIXKO (page 18).
Example of assembling - see page 15.



safety lock

item number	‡	IX
NIXPPVZ	0,008	⊕

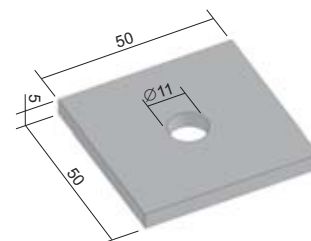
The safety lock is used to secure clamp supports type NIXPR (page 16) in the assembly profile.
Example of assembling - see page 15.



washer

item number	‡	‡	‡̄	IX
NIXPPZ	2,5	0,09	1	⊕

The fixation is executed by screw INOX S 10X40 (page 20) for single sided assembling or INOX S 10X70 (page 20) for double-sided assembling.
Example of assembling - see page 15.

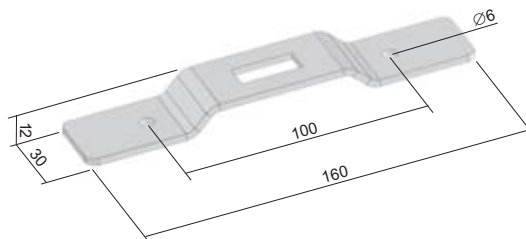




bracket

item number	↓	‡	⌄	IX
NIXKO	3,0	0,11	1	⊕

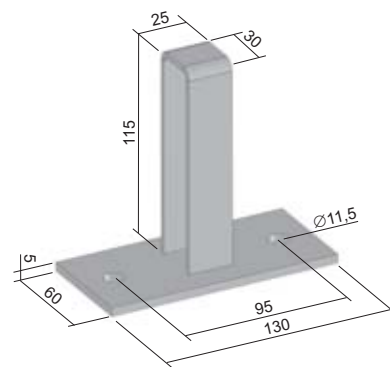
For the attachment of the assembly profile to the bracket there is used the NIXSMP 10X40 (page 20).
Example of assembling - see page 15.



single vertical bracket

item number	‡	⌄	IX
NIXKSJ	0,58	1	⊕

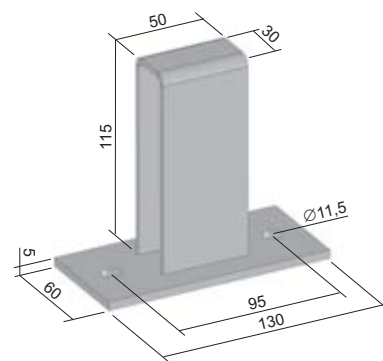
The bracket is designed to anchor the mounting profile on the ceiling or floor.
The fixing is carried out by the bolt INOXS 10X40 (page 20).
Example of assembling - see page 15.



double vertical bracket

item number	‡	⌄	IX
NIXKSD	0,46	1	⊕

The bracket is designed to anchor the mounting profile on the ceiling or floor.
The fixing is carried out by the bolt INOXS 10X70 (page 20).
Example of assembling - see page 15.

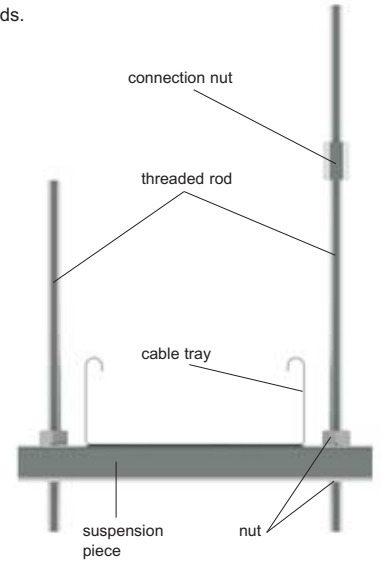
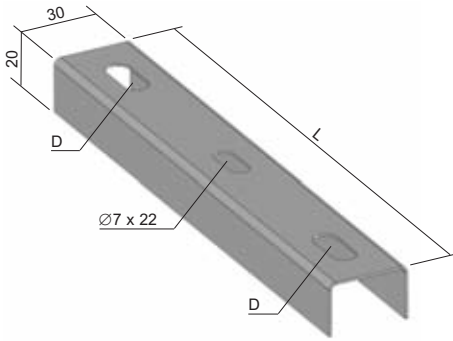




suspension piece

item number	L	D	t	±	IX
NIXZ 62	107	Ø9 x 18	1,0	0,07	⊕
NIXZ 125	170	Ø9 x 18	1,0	0,09	⊕
NIXZ 250	295	Ø9 x 18	1,0	0,20	⊕
NIXZ 500	545	Ø11 x 20	1,0	0,36	⊕

It is used to suspend a cable tray in combination with threaded rods.



threaded rod

item number	Ø	length	IX
NIXZT 1*	8	1000	⊕
INOXZT 8	8	2000	⊕
INOXZT 10	10	2000	⊕

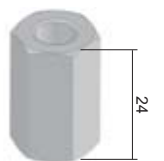
The standard length of the threaded rod is 2 m.
* until the sellout of stock



connection nut

item number	Ø	±	IX
NIXPM	M8	0,02	⊕

Used for the connection of two threaded rods INOXZT 8.





bolt + nut + lock washers

item number	↻	IX
NIXSMP 5X10	100	⊕

Lock washers serves to the securing of inductive interconnection.



bolt + lock nut + lock washer

item number	↻	IX
NIXSMP 6X10	100	⊕

Lock washer serve to the securing of inductive interconnection.



carriage bolt + nut + plain washer

item number	↻	IX
NIXSMP 10X40	100	⊕

It serves to the fixation of assembling profile NIXMP by help of console NIXKO (see page 15).



bolt with hexagonal head

item number	IX
INOXS 10X40	⊕
INOXS 10X70	⊕

INOXS 10X40 - serves to the fixation of assembling profile NIXMP to the elementary console NKSJ. The assembling is performed by help of the Pad NIXPPZ and the Nut INOXM 10 (see page 15).
 INOXS 10X70 - serves to the fixation of assembling profile NIXMP to the double console NIXKSD. The assembling is performed by help of the pad INOXPD 10 and the nut INOXM 10. Further it serves to the fixation of 2 assembling profiles NIXMP to one another.
 The assembling is performed by help of the pad NIXPPZ, pad INOXPD 10 and of the nut INOXM 10 (see page 15).



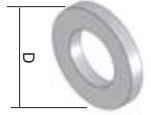
hexagon nut

item number	IX
INOXM 8	⊕
INOXM 10	⊕



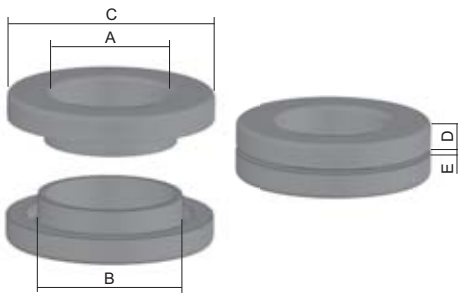
washer

item number	D	IX
INOXPD 8	17	⊕
INOXPD 10	20	⊕



bushing

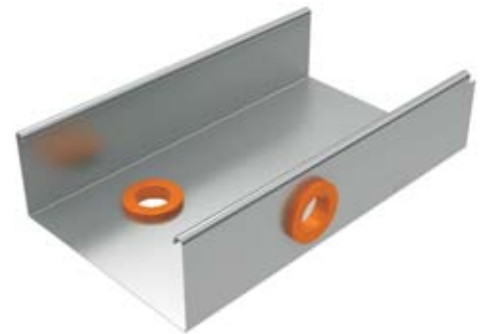
item number	A	B	C	D	E	‡	
NKP 9	10	15	24	5	0,5 - 5	0,002	●
NKP 11	12	18,5	26	5	0,5 - 5	0,004	●
NKP 13	16	20	31	6	0,5 - 5	0,006	●
NKP 16	17	22	33	6	0,5 - 5	0,006	●
NKP 21	24	28	40	7	0,5 - 5	0,010	●
NKP 29	31	37	53	7	0,5 - 5	0,018	●



Bushings serve for the safe passing of the cables through the sheet metal.

One part of the bushing is inserted from one side into the created opening in the bottom or the sidewall of the tray, the second part is inserted from the second side and gentle pressure is used to press both the parts together and this connects them firmly.

B - drilled hole diameter



edge protector

item number	‡	
NCH	0,06	●

The edge protector made from plastic with a steel insert is used to protect the edges of cable trays. Packing = 10 m.